



**Report "Getting there and back. X-ray of traffic accidents on holiday journeys in Spain (2012-2021)"**

**SUMMER IS THE MOST DANGEROUS TIME TO DRIVE: 5 DEATHS PER DAY AND A 20% HIGHER MORTALITY RATE**

- **Summer is the most difficult time of the year for driving because of heavy traffic, reckless drivers and fatigue due to long journeys. In the last decade, there have been 5 deaths per day during the summer season, a rate 20.5% higher than in non-holiday periods.**
- **In the last 10 years, more than 165,000 accidents were recorded during the summer holidays, killing more than 3,300 people and injuring 234,000 others.**
- **The most common accidents during summer travel tend to occur on conventional roads, leaving the road and very close to the destination, which can be the result of fatigue and overconfidence. This type of incident is more common in young men aged 18 to 29.**
- **Much room for improvement in terms of responsibility: 17 million drivers (61%) do not follow recommended rest breaks, 15 million (54%) confess to exceeding speed limits when travelling on holiday and a further 6 million (23%) confess to drinking alcohol during their summer outbound and return journeys.**
- **Combining the four holiday periods common to all of Spain (Easter, summer, December bank holiday and Christmas), the stretches of road with the most deaths in the last decade in this type of journeys are located in Tarragona, on the AP-7, (km 320-334), in Burgos, on the old N-1 (km 254-278) and in Girona, on the C-33 (km 6-9).**
- **By Autonomous Community, the regions with the highest number of critical stretches of road during the holidays are Catalonia, Andalusia, Castile and Leon and Valencia. Those with the fewest such dangerous stretches are Extremadura, Navarre and Murcia.**

**Madrid, 11 July 2023.** The Spanish Directorate General for Traffic (DGT) warns: **95 million long-distance summer journeys** are expected on Spanish roads this year, **1.75%** more than last year. This type of journey is particularly critical in terms of road safety, mainly due to the effects of **heat, fatigue, distractions, heavy traffic, recklessness** and **speeding** in an attempt to arrive as soon as possible.

Aware of this, the [Línea Directa Foundation](#) wanted to analyse summer **outgoing and return trips**, comparing them with **normal working periods** and with the **rest of the holiday periods** shared by all of Spain (Easter, December bank holiday and Christmas). The aim is to determine whether these periods have a higher accident

rate, to analyse the types of accidents during this time and to find out the habits of Spanish drivers when they make these types of journeys.

To this end, the Línea Directa Foundation has presented the study "**Getting there and back. X-ray of traffic accidents on holiday journeys in Spain (2012-2021)**" ["**Ir y volver. Radiografía de los accidentes de tráfico en los desplazamientos vacacionales en España (2012-2021)**"], prepared in collaboration with FESVIAL (Spanish Foundation for Road Safety). The study, based on **official data from the Spanish Directorate General for Traffic (DGT)** and more than **1,700 surveys** carried out throughout the country, yields alarming conclusions; according to the statistics, **summer is the most complicated time of the year** for driving. Not surprisingly, in the last decade, there have been **5 casualties per day** during the summer season, a **rate 20.5% higher than in non-holiday periods** and significantly higher than other public holidays.

In the last 10 years there have been **230,000 accidents** during holiday periods, of which around **165,000 (71%)** occurred during the summer. There were also **3,300 road fatalities** and **234,000 injuries recorded during this time**.

### **The summer accident**

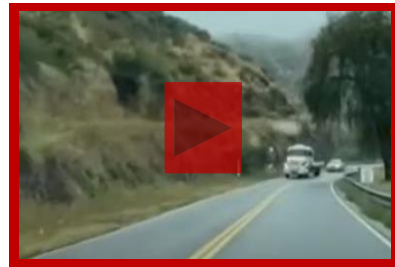
The most frequent summer accident is **driving off the road**, which is up 1.6 points compared to non-holiday periods. **Head-on collisions, rollovers** and **collisions with obstacles**, all of which are closely related to fatigue and distracted driving, are also on the rise, as shown in the examples below:



**Driving off the road with rollover**



**Rear-end collision or collision with road fixtures**



**Head-on collision**

In the summer there is a spike in accidents on **conventional roads**, which is where 65% of road accidents occur. In addition, there is a very telling circumstance: these accidents tend to occur **close to the destination**, which could be caused not only by fatigue, but also by a certain relaxation on the part of the driver as they see that they are about to arrive.

This type of accident tends to affect **men** more frequently, with an increased frequency in younger age groups, especially **those aged 18-29**.

### **Most critical stretches of road**



The **Línea Directa Foundation** also wanted to determine which **stretches of road have the highest number of fatalities** in Spain during the four holiday periods the whole country shares. To this end, it has analysed the Spanish road network in 20-km modular sections where there have been at least three fatal accidents during the holiday periods in the last decade.

The regions with the highest number of critical stretches are **Catalonia, Andalusia, Valencia and Castile and Leon**, while **Extremadura, Navarre and Murcia are on the opposite end of the scale**. The 10 stretches of road with the most deaths in the last decade during summer travel are in **Tarragona**, on the AP-7, (km 320-334); in **Burgos**, on the old N-I (km 254-278), and in **Girona**, on the C-33 (km 6-9).

Rk	Vía	Tramo	Provincia	A. mortales	Fallecidos	Heridos
1	AP-7	Km 320-334	Tarragona	4	18	52
2	N-I	Km 254-278	Burgos	4	7	15
3	C-63	Km 6-9	Girona	3	7	11
4	A-7	Km 517-530	Alicante	4	7	5
5	A-44	Km 129-145	Granada	6	6	5
6	A-7	Km 365-376	Valencia	4	6	5
7	A-7	Km 310-328	Valencia	5	6	3
8	N-631	Km 2-16	Zamora	3	6	3
9	N-232	Km 199-207	Zaragoza	3	6	2
10	A-4	Km 159-165	Ciudad Real	3	5	40

### Spanish drivers and their behind-the-wheel behaviour in the summer

With the summertime "**Operation Vacation**" approaching, the Línea Directa Foundation also wanted to find out more about **the habits of Spanish drivers** on long-distance journeys. And there is certainly much room for improvement.

**15.5 million** drivers (56%) do not plan their route properly, another **15 million** (54%) confess to exceeding **speed limits** during their holiday travel and **17 million** (61%) do not follow the DGT's recommendations on **stops and rests**. In addition, **more than half do not take turns** driving with other passengers, an attitude particularly prevalent among men, and **82%** do not know how to properly load the vehicle.

But perhaps the most striking aspect of Spanish drivers' habits on holiday journeys comes from alcohol, with **6 million motorists (23%) confessing to drinking beer and even mixed drinks** during their summer outbound and return journeys. In addition, **25%** of those surveyed admitted to **eating a lot of food** during these journeys, which can lead to drowsiness and lethargy.

## Methodology

The study was conducted in collaboration with the FESVIAL Foundation. To carry it out, the DGT's ARENA database was used to identify the number of accidents, deaths and injuries in summer, with base dates from 29 June to 3 September for each year between 2012 and 2021 and analysing the age and gender of the drivers, the type of road and the temporal and spatial location of the accident. Comparisons have also been made with the other 3 large holiday travel times common to all of Spain: Easter, December bank holiday and Christmas. Each period has been individualised by year. For the daily casualty rate, the number of road fatalities was divided by the number of days analysed. To identify the stretches with the most deaths, all stretches of road in Spain were analysed, establishing modifiable patterns of 20 kilometres in which at least 3 fatal accidents occurred in the 4 holiday periods between 2012 and 2021. The survey was carried out in collaboration with the consultancy firm MDK. It included 1,705 interviews with quotas by gender, age and Autonomous Community, with a sampling error of +/- 2.37% ~ 3.1% for the proportional sample, with a confidence level of 95%. The fieldwork was carried out between 15 and 22 June, 2023.

## About Línea Directa Foundation

Línea Directa Foundation is a non-profit institution that was created in 2014 with the aim of helping to build a better and safer society by promoting various initiatives with road safety as its main area of action. The Foundation was set up by Línea Directa Aseguradora as a further show of its commitment to reduce traffic accidents.

### Línea Directa Foundation

Santiago Velázquez  
[santiago.velazquez@fundacionlineadirecta.org](mailto:santiago.velazquez@fundacionlineadirecta.org)  
682 196 953  
Ricardo Carrasco  
[ricardo.carrasco@fundacionlineadirecta.org](mailto:ricardo.carrasco@fundacionlineadirecta.org)  
682 387 533

### Trescom Comunicación

Florita Vallcaneras 627 811 799  
[florita.vallcaneras@trescom.es](mailto:florita.vallcaneras@trescom.es)  
Elena Vélez 660 176 951  
[elena.velez@trescom.es](mailto:elena.velez@trescom.es)  
Pablo Gómez 634 955 019  
[pablo.gomez@trescom.es](mailto:pablo.gomez@trescom.es)

Follow us on:



This initiative applies to the following **Sustainable Development Goal**:

